

好利來有限公司

HOLLYLAND COMPANY LIMITED

Unit 5,29/F,Enterprise Square Three, 39 Wang Chiu Road,Kowloon
Bay,Kowloon,Hong Kong S.A.R.

Tel: 852-2797 9138 Fax: 852-2341 4199

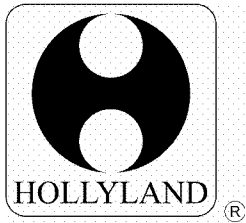
WEB SITE: <http://www.hollylandgroup.com> <http://www.hollyfuse.com>



BS EN ISO9001:2000
Certificate No. FM40402

Fuse Holder

Part no.: FH-043A



好利來有限公司

HOLLYLAND COMPANY LIMITED

Unit 5,29/F,Enterprise Square Three, 39 Wang Chiu Road,Kowloon
Bay,Kowloon,Hong Kong S.A.R.

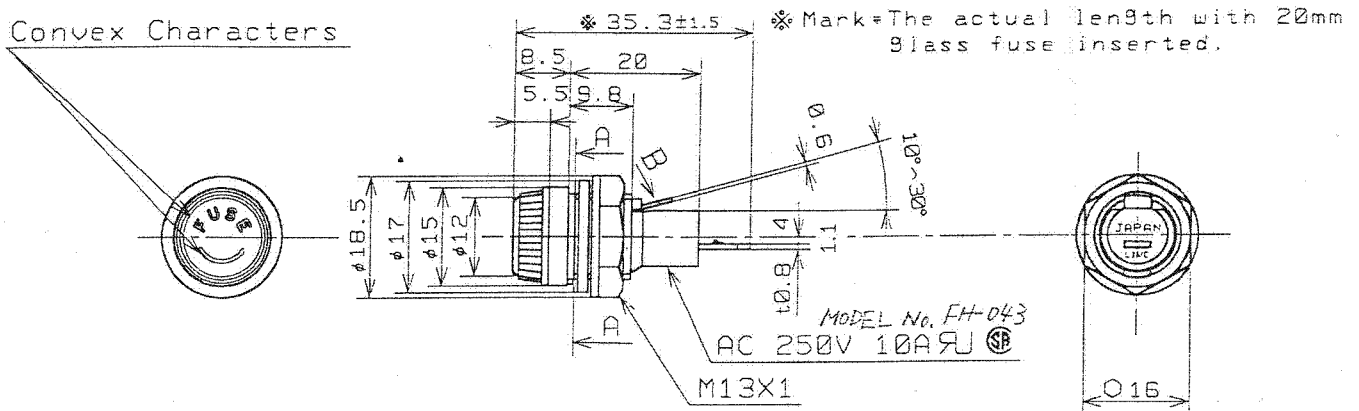
Tel: 852-2797 9138 Fax: 852-2341 4199

WEB SITE: <http://www.hollylandgroup.com> <http://www.hollyfuse.com>

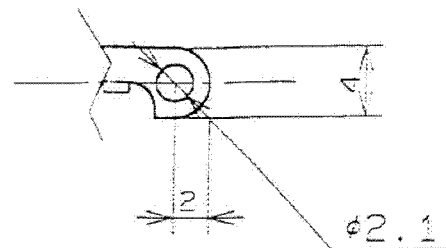
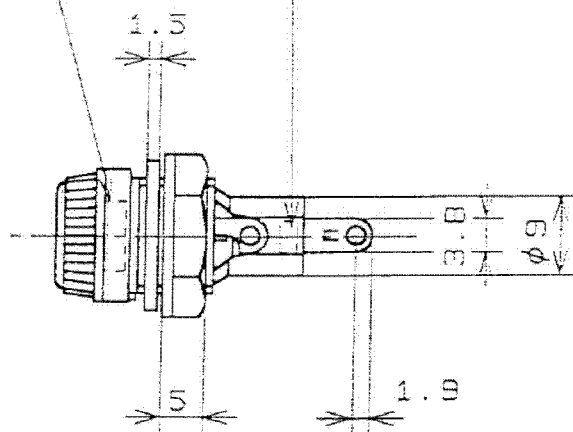


BS EN ISO 9001:2000
Certificate No. FM40402

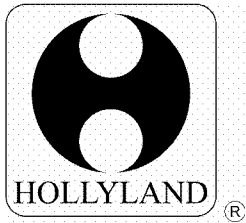
Convex Characters



MODEL No. ~~DELETE~~
EDK



"B" Enlarged drawing (2/1)



好利來有限公司

HOLLYLAND COMPANY LIMITED

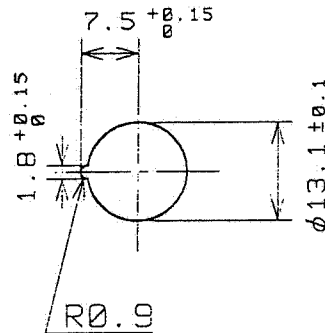
Unit 5,29/F,Enterprise Square Three, 39 Wang Chiu Road,Kowloon
Bay,Kowloon,Hong Kong S.A.R.

Tel: 852-2797 9138 Fax: 852-2341 4199

WEB SITE: <http://www.hollylandgroup.com> <http://www.hollyfuse.com>

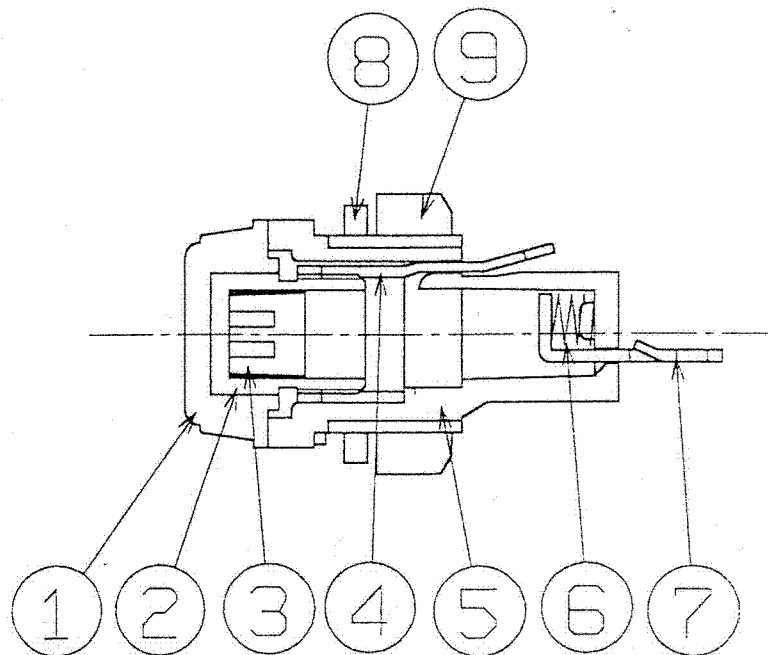


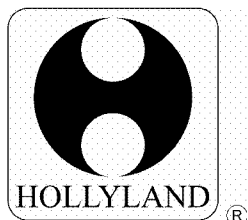
BS EN ISO 9001:2000
Certificate No. FM40402



Mounting Hole
A-A Section

Note: Registered Part number for UL, and CSA
is "FH043". For application of "FH043A"
Please apply to UL, and CSA as "FH043".





好利來有限公司

HOLLYLAND COMPANY LIMITED

Unit 5,29/F,Enterprise Square Three, 39 Wang Chiu Road,Kowloon
Bay,Kowloon,Hong Kong S.A.R.

Tel: 852-2797 9138 Fax: 852-2341 4199

WEB SITE: <http://www.hollylandgroup.com> <http://www.hollyfuse.com>



BS EN ISO 9001:2000
Certificate No. FM40402

1. GENERAL

1-1 SCOPE : These specifications cover FUSE HOLDER for general appliances and industrial equipments.

1-2 OPERATING TEMPERATURE RANGE : -20°C to +60°C

1-3 MATCHING FUSE : $\phi 5.2 \pm 0.15 \times 20 \pm 0.5 \text{ mm}$

1-4 NORMAL TEST CONDITIONS : Normal temperature (5 to 35°C), normal humidity (45 to 85%RH) and normal atmospheric pressure (860 to 1060hPa)

2. CONSTRUCTION AND COMPONENTS See the outline drawing.

3. COMPONENTS

P. No.	Parts name	Material	Finish	Flame class
1	Cap Cover	Molded Phenolic		UL 94 V-0
2	Cap	Brass	Tin plated	
3	Clip Spring	Phosphor Bronze		
4	Side Terminal	Brass	Nickel plated	
5	Body	Molded Phenolic		UL 94 V-0
6	End Terminal	Brass	Nickel plated	
7	Coil Spring	Steel Wire		
8	Resin Washer	ABS		
9	Nut	PA66		

4. STANDARD · RATING

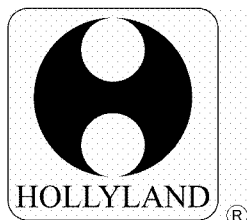
Standard name	Rating	Recognized number
U L	AC 250V 10A	E 46754
C S A		LR 30024

5. ELECTRICAL PERFORMANCES

No.	Property	Test condition	Performance
5-1	Contact resistance	Measured with a matching dummy fuse at 100mA DC	30 milliohms max. each
5-2	Insulation resistance	500VDC is applied to between terminals for 1 minute.	100 megohms min.
5-3	Voltage proof	1500VAC is applied to between terminals for 1 minute.	No insulation defect shall be observed.

6. MECHANICAL PERFORMANCES

No.	Property	Test condition	Performance
6-1	Cap tightening torque	After insertion of matching fuse (or dummy fuse) into fuseholder, we tighten under 54N (5.5kgf).	No defect on appearance and structure shall be observed.



好利來有限公司

HOLLYLAND COMPANY LIMITED

Unit 5,29/F,Enterprise Square Three, 39 Wang Chiu Road,Kowloon
Bay,Kowloon,Hong Kong S.A.R.

Tel: 852-2797 9138 Fax: 852-2341 4199

WEB SITE: <http://www.hollylandgroup.com> <http://www.hollyfuse.com>



6-2	Nut tightening torque	When we mount fuseholder on matching metal chassis, we tighten nut under 117N (12kgf).	No defect on appearance and structure shall be observed.
6-3	Soldering	The tip of soldering irons temperature and applied time : $350 \pm 10^{\circ}\text{C}$ and 3 ± 0.5 seconds. (Use solder with rosin only.)	The soldering part shall be well covered with solder and there are no small ingot.
6-4	Soldering heat	The tip of soldering irons temperature and applied time : $350 \pm 10^{\circ}\text{C}$ and 5 ± 1 seconds.	No defect on appearance shall be observed.

7. ENDURANCE TO CLIMATE

No.	Property	Test condition	Performance
7-1	Endurance to cold	Tested in the condition of $-25 \pm 3^{\circ}\text{C}$ in the temperature for 96 hours and then left in normal temperature and humidity.	Contact resistance : Complied with performance in Item 5-1.
7-2	Endurance to heat	Tested in the condition of $70 \pm 2^{\circ}\text{C}$ in the temperature for 96 hours and then left in normal temperature and humidity.	Insulation resistance : 10 megohms min.
7-3	Endurance to humidity	Tested in the condition of $40 \pm 2^{\circ}\text{C}$ in the temperature and 90% to 95% in relative humidity for 96 hours and then left in normal temperature and humidity. (Drops of water shall be wiped off.)	Voltage proof : Complied with performance in Item 5-3.

8. DURABILITY

No.	Property	Test condition	Performance
8-1	Electrical durability	After insertion of matching dummy fuse into fuseholder, we do temperature rise test of terminal at rating load.	Temperature rise : 30°C max. No electrical and mechanical defect shall be observed.

9. NOTE

The matching dummy fuse which use for measurement is using brass (gold plated) $\phi 5.2 \times 20\text{mm}$.

When you insert or remove the fuse, please turn the cap cover with pushing cap cover against fuseholder's body.