

TOMY INDUSTRIAL CO., LIMITED

東 鎂 電 子 工 業 有 限 公 司

UNIT 1, 6/F, HENG NGAI JEWELRY CENTRE, NO. 4 HOK YUEN ST. EAST, HUNG HOM  
KOWLOON, HONG KONG. TEL : (852) 27656486 FAX : (852) 27648168

# SPECIFICATIONS

## 規 格 書

### POTENTIOMETER

### 電 位 器

CUSTOMER NAME 客戶

TRIM-POT

CUSTOMER P/N 客戶編號

MODEL NO. 型號

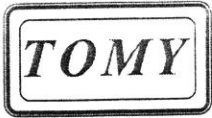
RV16LN(PH)-B100K-15KQ

ISSUING DATE 發出日期

JULY 22, 1998

Please sign this sheet after your approval and kindly return us a copy for reference!

APPROVED BY CUSTOMER	DATE OF APPROVAL



# TOMY INDUSTRIAL CO., LIMITED

東 鎂 電 子 工 業 有 限 公 司

UNIT 1, 6/F, HENG NGAI JEWELRY CENTRE, NO. 4 HOK YUEN ST. EAST, HUNG HOM  
KOWLOON, HONG KONG. TEL : (852) 27656486 FAX : (852) 27648168



## GENERAL SPECIFICATIONS



MODEL NO.	RV16LN(PH)-B100K-15KQ
-----------	-----------------------

### Electrical Characteristics 電氣特性

- |  |   |                         |                    |
|--|---|-------------------------|--------------------|
| 1. Total Resistance 全阻抗值               | : | 100K                    | Ω                  |
| 2. Total Resistance Tolerance 全阻抗容許誤差值 | : | ±                       | 20%                |
| 3. Resistance Taper 阻抗規律               | : | B                       | Curve              |
| 4. Power Rating 額定功率                   | : | 0.125                   | W (Maximum)        |
| 5. Voltage Rating 額定電壓                 | : | 200                     | V                  |
| 6. Residual Resistance 殘留阻抗值           | : | (Between Term. 1 and 2) | 10Ω                |
| 7. Residual Resistance 殘留阻抗值           | : | (Between Term. 2 and 3) | 10Ω                |
| 8. Rotational Noise 轉動噪音               | : | Less than               | 47 mV              |
| 9. Insulation Resistance 絕緣阻抗值         | : | More than               | 100 MΩ at 500 V DC |
| 10. Voltage Proof 耐電壓                  | : | One minute at           | 500 V AC           |

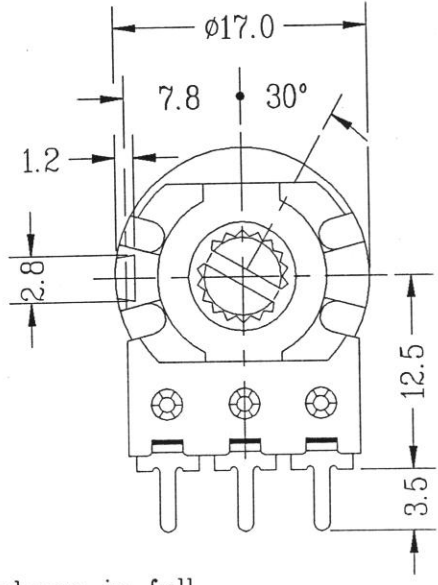
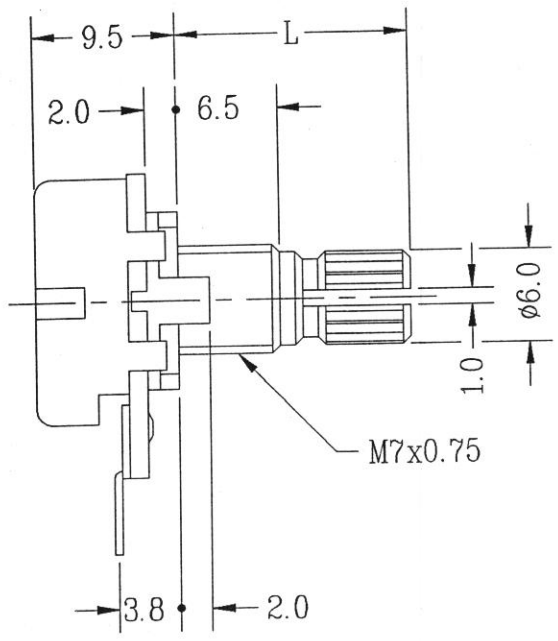
### Mechanical Characteristics 機械特性

- |   |   |                      |
|---|---|----------------------|
| 1. Dimensions 尺寸圖                       | : | See Attached Drawing |
| 2. Total Rotational Angle 旋轉角度          | : | 300° ± 5°            |
| 3. Rotation Torque 旋轉力矩                 | : | 20 ~ 250 gf.cm       |
| 4. Click Position(s) 定位                 | : | Nil                  |
| 5. Click Force 定位阻力                     | : | Nil                  |
| 6. Tap Position 抽頭位置                    | : | Nil                  |
| 7. Stopper Strength 止擋強度                | : | 8 Kgf.cm (Min.)      |
| 8. Push-Pull Strength 推拉強度              | : | 8 Kgf (Min.)         |
| 9. Shaft Wobble 轉軸振幅                    | : | 0.50 mm (Max.)       |
| 10. Shaft Bending 轉軸偏心                  | : | 0.35 mm (Max.)       |
| 11. Bushing Nut Tight Strength 軸套螺母固緊強度 | : | 10 Kgf.cm (Min.)     |

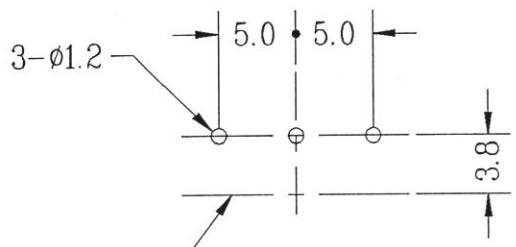
### Other Characteristics 其他特性

- |                       |   |                    |
|-----------------------|---|--------------------|
| 1. Rotation Life 旋轉壽命 | : | Min. 15,000 Cycles |
|-----------------------|---|--------------------|

CHECKED BY 審查	APPROVED BY 核准



shaft shown in full  
C.C.W. position



MOUNTING SURFACE

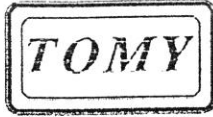
		Tolerances Unless Otherwise Specified	
SCALE	UNIT	L ≤ 10	±0.3
	mm	10 < L < 100	±0.5
Revision Notes		100 ≤ L	±0.8
		Angular Dimension	±5°
	DESIGNED	DRAWN	CHECKED
		EDDIE WONG	

TOMY INDUSTRIAL CO., LIMITED

DRAWING TITLE  
RV16 SERIES

DRAWING NAME  
RV16LN(PH)

DRAWING NO.  
RV-16-002-001



# TOMY INDUSTRIAL CO., LIMITED

東 鎂 電 子 工 業 有 限 公 司

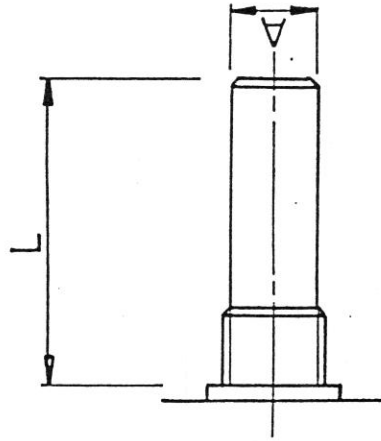
Unit 1, 6/F, Heng Ngai Jewelry Center, No. 4 Hok Yuen St. East, Kln., Hong Kong.

TEL : (852) 27656486

FAX : (852) 27648168

香港九龍  
東街四號  
恒藝珠寶  
大廈六樓  
一室

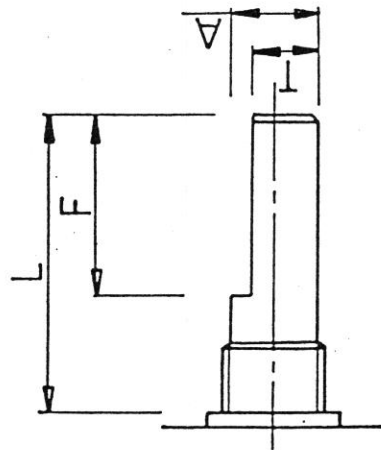
(C) R Shaft



A =  $\phi 6$

RV16	L	R		R(NL)	
	15	20	25		
		30			

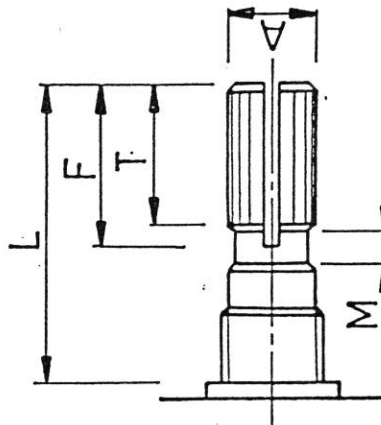
(B) F Shaft



A =  $\phi 6$  T = 4.5

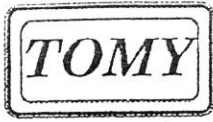
L	15	20	25	30	35
F	7	12	14	14	14

(A) KQ Shaft



A =  $\phi 6$

L	15	20	25	30	35	40	45
T	6	10	12	12	12	12	12
F	6.5	11	14	14	14	14	14
M	1.0	2	4	4	4	4	4



# TOMY INDUSTRIAL CO., LIMITED

UNIT 01, 6/F, HENG NGAI JEWELRY CENTRE, NO. 4 HOK YUEN ST. EAST, HUNG HOM,  
KOWLOON, HONG KONG. TEL : (852) 27656486 FAX : (852) 27648168

## Taper Specification

