

PUSH BUTTON SWITCH

Features

- The power switch conforms to safety standards for electrical equipment.
- A superior space factor by reducing the depth dimension.
- The snap-in type for easy mounting.
- The color can be changed to correspond to the set design.

E88392



Applications

- Data processing equipment and office equipment such as monitors, home electric equipment and power supply.

Specifications

Item	Standard
Rating	10A 250V AC 12A 125V AC (UL 1054 EN61058-1)
Insulation Resistance	100M Ω min. (Dc 500v)
Dielectric Strength	AC 1000V (50/60Hz for 1 minute)
Contact Resistance	50m Ω max.
Electrically Life	10,000 cycles

Product Selection

SN30

SERIES

FUNCTION

BASE COLOR

ACTUATOR COLOR

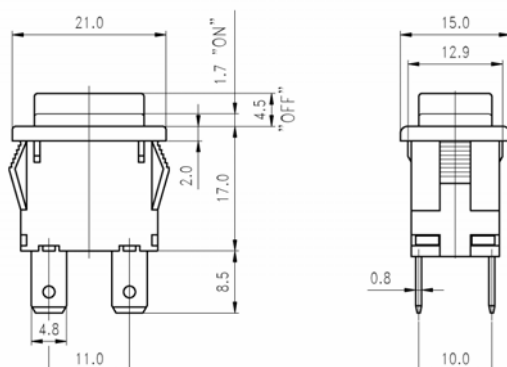
CODE	POSITION
2A	ON - OFF 2P
2B	(ON) - OFF 2P
4A	ON - OFF 4P
4B	(ON) - OFF 4P
2AL	ON - OFF W/LAMP
4AL	ON - OFF W/LAMP

CODE	COLOR
B	Black
W	White

CODE	COLOR
B	Black
R	Red
V	Transparent Red
J	Transparent Orange
U	Transparent Green

FUNCTION	SCHEMATIC
4A	
4B	
4AL	

Dimensions



Panel hole size



PANEL THICKNESS	DIM. X
0.75 ~ 1.25	19.2
1.25 ~ 2.0	19.4
2.0 ~ 3.0	19.6

HIGHLY

G1

Design, specifications are subject to change without notice.