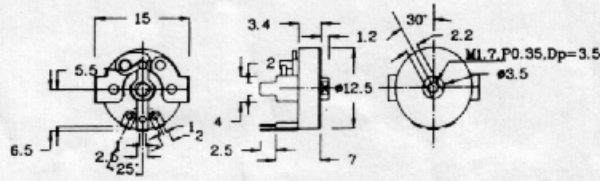
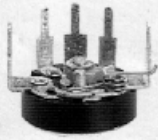
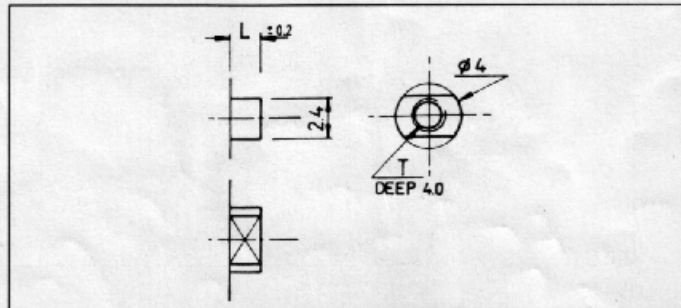


V 12S(UPV)



12mm Size, Single unit With Switch
 Rotation angle: $230^\circ \pm 5^\circ$
 Rotation torque: 20 - 150 g.cm
 Power rating: 0.08W(linear taper, B)
 0.04W (other taper)
 Voltage rating: 150V(linear taper, B)
 100V (other taper)
 Switch circuit: S.P.S.T.
 Switch rating: 12VDC, 1A

SHAFT DETAIL :



DIMENSIONS

L	T
1.2	M1.7 x PO.35
	M2 x PO.4
1.8	M1.7 x PO.35
2.0	M1.7 x PO.35

