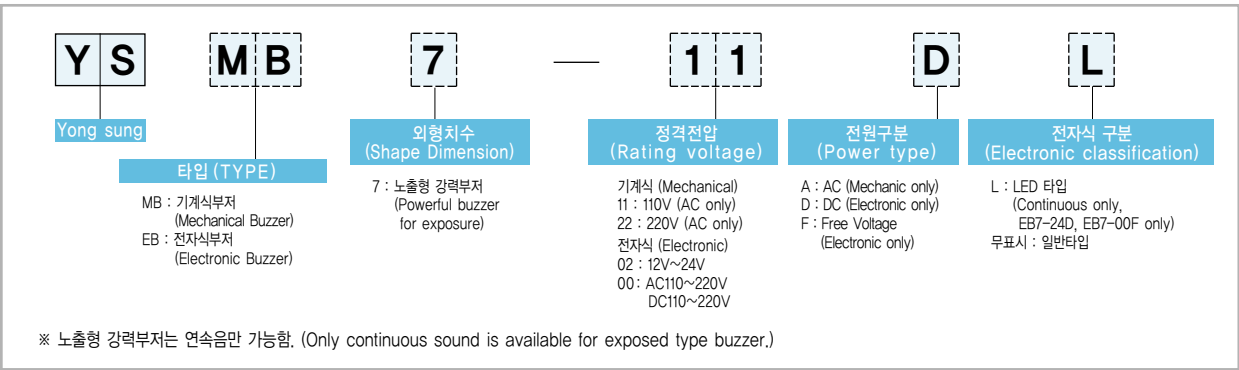
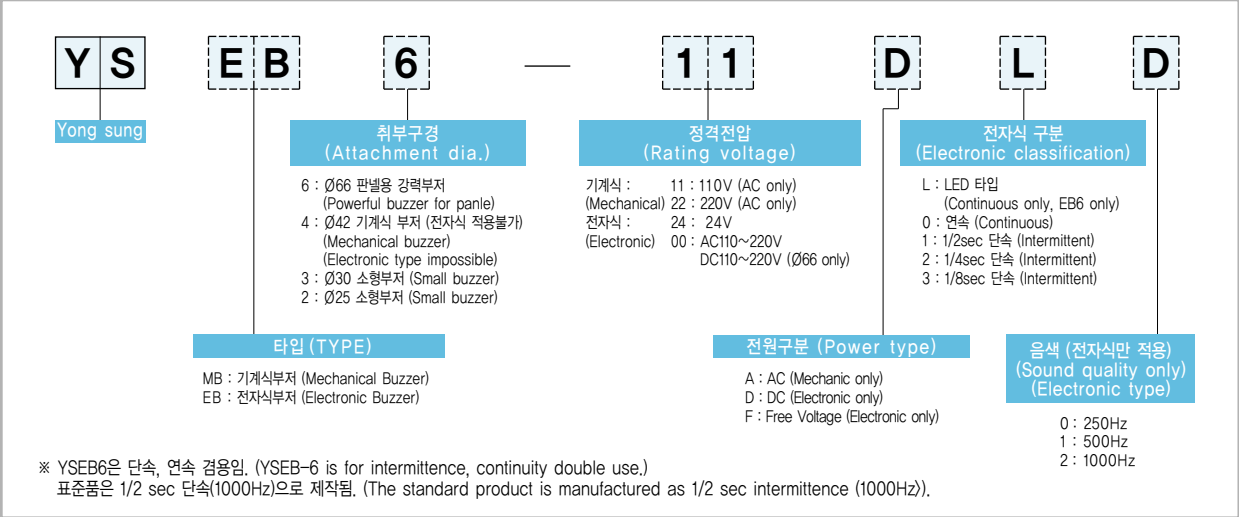


11-6 부저 Buzzer

형식 구분도 | Type Classification Diagram



특징 | Features

- 판넬용 소형부저로서 커다란 용량의 음을 낼 수 있습니다.
- 소형이므로 취급하기가 용이합니다.
- 음량이 80dB 정도이므로 경보효과가 매우 좋습니다.
- 전자식의 경우 연속음, 단속음을 선택 사용할 수 있습니다.
- As a small buzzer for panel use, large sound can be produced.
- With small size, maintenance is easy.
- With about 80dB of volume, alarm effect is very good.
- In case of electronic type, continuous or intermittent sound can be chosen.

용도 | Application

- 자동조작반신호용
- 산업용기계 비상신호용 경보용
- 음량조절형
- For auto operating control-signal
- For emergency signal alarm of industrial machines
- For volume control

정격 | Rating |

▶ 기계식 Buzzer – Mechanical Type Buzzer

구 분 (Classification)	판넬용 강력 부저 (Powerful buzzer for panel)		판넬용 소형 부저 (Small buzzer for panel)			
	YSMB6-11A	YSMB6-22A	YSMB2-11A	YSMB3-11A	YSMB2-22A	YSMB3-22A
형식 (Type)	YSMB6-11A	YSMB6-22A	YSMB2-11A	YSMB3-11A	YSMB2-22A	YSMB3-22A
정격전압 (Rating voltage)	AC110V	AC220V	AC110V		AC220V	
소비전력 (Power consumption)	8VA	7.5VA	4VA		4VA	
음 량 (Volume of sound)	Approx. 75 dB		Approx. 65 dB			

▶ 전자식 Buzzer – Electronic Type Buzzer

구 분 (Classification)	판넬용 강력 부저 (Powerful buzzer for panel)		판넬용 소형 부저 (Small buzzer for panel)		판넬용 강력 부저 (LEDTaip) (Powerful buzzer for panel) (LED type)	
	YSEB6-24D	YSEB6-00F	YSEB2-24D	YSEB3-24D	YSEB6-00F L	YSEB6-24D
형식 (Type)	YSEB6-24D	YSEB6-00F	YSEB2-24D	YSEB3-24D	YSEB6-00F L	YSEB6-24D
정격전압 (Rating voltage)	DC24V	AC110 ~ 220V DC110 ~ 220V	DC24V	DC24V	AC110 ~ 220V DC110 ~ 220V	DC24V
소비전력 (Power consumption)	기술자료 17-3 참조 (Refer to Technical Data 17-3)					
음 량 (Volume of sound)	Approx. 80 dB		Approx. 70 dB		Approx. 80 dB	

▶ 노출형 Buzzer – Exposure Type Buzzer

구 분 (Classification)	노출형 기계식 강력 부저 (Mechanical powerful buzzer of exposure type)		노출형 전자식 강력 부저 (Electronical powerful buzzer of exposure type)			노출형 전자식 강력 부저 (LEDTaip) (Electronical powerful buzzer of exposure type) (LED type)	
	YSMB6-11A	YSMB6-22A	DC12 ~ DC24V	AC110 ~ AC220V	DC110 ~ DC220V	AC110 ~ 220V DC110 ~ 220V	DC24V
형식 (Type)						YSEB7-00F L	YSEB7-24D
정격전압 (Rating voltage)	AC110V	AC220V	DC12 ~ DC24V	AC110 ~ AC220V	DC110 ~ DC220V	AC110 ~ 220V DC110 ~ 220V	DC24V
소비전력 (Power consumption)	8VA	7.5VA	기술자료 17-3 참조 (Refer to Technical Data 17-3)				
음 량 (Volume of sound)	Approx. 75 dB		Approx. 80 dB			Approx. 80 dB	

부품 재질 | Part Materials |

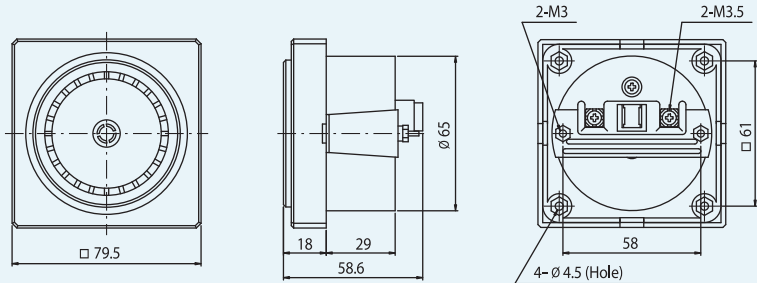
부 품 (Part)	재 질 (Materials)
캡 (Cap)	ABS 수지 (ABS Resin)
몸 체 (Body)	ABS 수지 (ABS Resin)

결선 방법 (전자식) | Wire Connection Method (Electronic type) |

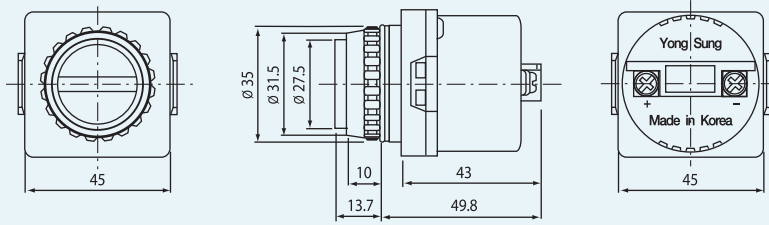
중간단자가 Common이며(-)극이고, 우측단자가 연속음, 좌측단자가 단속음입니다.
(Middle terminal is Common and (-) Pole.
Right terminal is continuous sound and left terminal is intermittent sound.)

외형 / 치수도 | Shape / Dimension Drawing | (unit : mm)

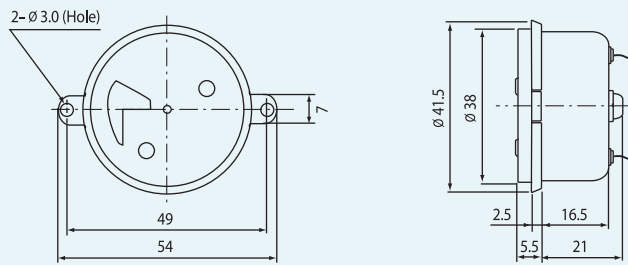
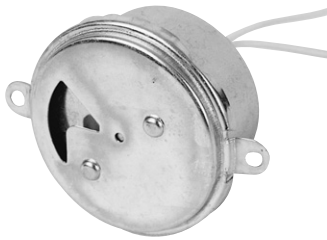
Ø66



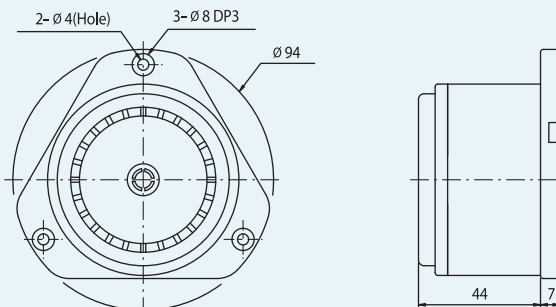
Ø25



Ø42 (기구용)



노출형 (Exposure Type)



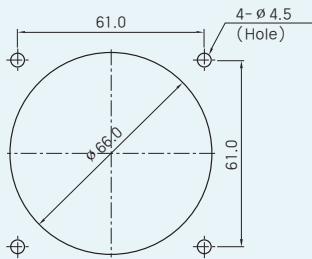
기
타
품
목

패널 취부 방법 | How to Attach Panel |

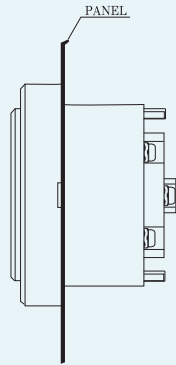
- 패널용 강력부저는 고정쇠를 사용하여 부착하는 방법과 Nut를 사용하여 부착하는 방법이 있습니다.
- Powerful buzzer can be attached by fixed bracket or nut.

▶ 고정쇠 사용부착 방법 - How to attach fixed metal

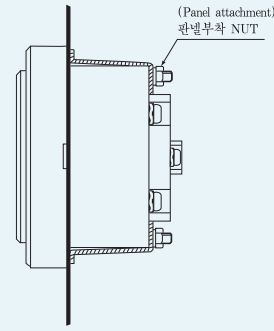
1. 패널에 Ø66mm Hole 가공
(Process hole of Ø66mm
on panel)



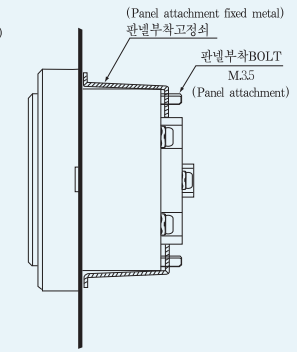
2. 패널에 넣습니다.
(Put into panel.)



3. 패널부착고정쇠
(Panel attachment
fixed metal)



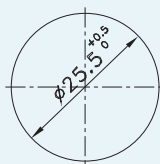
4. 고정쇠를 부저에 붙은 고정용 볼
트에 끼우고 너트를 조입니다.
(Put fixed metal into fixing
bolt attachment to buzzer
and tighten nut.)



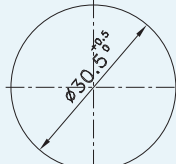
패널에 부착된 제품 (Product attached to panel)

패널 가공 치수 | Cut-out Dimension |

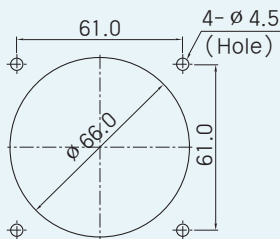
(unit : mm)



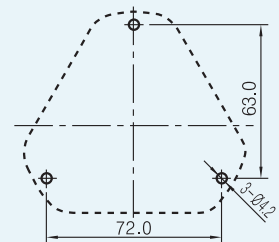
Ø25



Ø30



Ø66 (NUT취부용)



노출형 (Exposure Type)